



Josh Eule

540.207.9170

1391 Industry Drive #4D

Traverse City, Michigan

## ENGINE SERVICE CLARIFICATION SHEET

**EVERY ENGINE IS "BROKEN IN" ON MY PERSONAL BIKE  
TO ENSURE QUALITY BEFORE SHIPPING BACK TO YOU**

## **PRICING SCHEDULE**

### **STOCK ENGINE REBUILD (EXCLUDES CARB WORK)**

3 Speed CT70/Z50/Z50R/XR&CRF50/70 -- \$1500.00 + tax

4 Speed CT70H/SL70/XL70/CL70 -- \$1550.00 + tax

ATC70/TRX70 -- \$1565.00 + tax (Excludes Pullstarter Refurb, See Below)

Pull Starter Refurb – ATC70/TRX70 \$125.00 + parts (spring, rope, handle, decals etc)+tax

### **OEM CARB REBUILD**

ADD \$145.00 labor + rebuild parts needed (\$40-60 generally) + tax

Sometimes it is a good idea to just purchase a new OEM carb when available. I can provide pricing on new options when appropriate

### **88cc Upbore For The OEM Stock Cylinder Head**

ADD \$75.00 Raw Aluminum or I can paint HT black/Silver + tax

TBparts 88cc Aluminum Cylinder and matching piston for a stock OEM head

### **Thread Repairs / Welding / Machining**

\$100/hr labor rate + parts & materials

- Drill outs for broken screws or studs
- Case Thread Repairs – Time-Sert inserts are used, not heli-coils
- Spark Plug Hole – Time-Sert inserts are used, not heli-coils
- Welding Repairs – TIG / MIG Welding

## Carburetor Scope

| INCLUDED   | UPCHARGE  |
|--|---|
| <ul style="list-style-type: none"><li>● Test and tune your rebuilt engine with my personal carb, airbox &amp; Intake manifold setup</li><li>● No carb cleaning service with base build cost – Must ADD this service to base cost and ship your carb and manifold with engine</li></ul> | <ul style="list-style-type: none"><li>● New carb purchase option</li><li>● Rebuild of your supplied carb (Ultrasonic + Vapor Hone + Carb Packing Parts)</li><li>● Gaskets / Hardware / Heat Spacers</li><li>● Fuel lines / inline filters</li></ul> |

## Cylinder Head Scope

| INCLUDED   | UPCHARGE  |
|--|---|
| <ul style="list-style-type: none"><li>● Normal dirt/gasket removal</li><li>● Multi-Stage cleaning with Vapor Honing as final step</li><li>● New Valves (Int/Ex)</li><li>● New Honda Valve Springs (Inner/Outer)</li><li>● New Honda Tappet Screws/Nuts</li></ul> | <ul style="list-style-type: none"><li>● Removal of seized exhaust pipe in port</li><li>● Bolt extraction/thread repair</li><li>● RTV covered gasket surface</li><li>● Paint Removal @ Head</li><li>● New camshaft/rockers</li><li>● Missing /Broken Parts</li><li>● Worn Valve Guide = Remove &amp; Replace</li></ul> |

|   |  |
|---|--|
| <ul style="list-style-type: none"> <li>● New Honda Valve stem seal(s)</li> <li>● New Hardware/Screws</li> <li>● Acorn nuts / thick sealing washers</li> <li>● High Quality Aftermarket Gaskets</li> <li>● New valve seats cut + &amp; leak tested</li> <li>● NGK Spark Plug</li> <li>● OEM Cam chain + New Roller(s)</li> <li>● Light Polishing of your OEM Round Cam Cover</li> <li>● New tappet covers</li> <li>● Valve lashes set to spec</li> </ul> | <ul style="list-style-type: none"> <li>● New covers, if broken</li> <li>● Aftermarket Performance Cylinder Head /Parts / Carb</li> <li>● Time-Sert repairs - Bolt Holes &amp; Spark Plug Hole</li> </ul> |
|---|--|

### Jug/Cylinder Scope

| INCLUDED   | UPCHARGE  |
|--|---|
| <ul style="list-style-type: none"> <li>● Normal dirt/gasket removal</li> <li>● New Aftermarket Aluminum Piston / Rings / Wrist Pin &amp; Clips (Piston Sized to Bore Requirements)</li> <li>● Re-Boring + Honing of Cylinder Wall</li> </ul> | <ul style="list-style-type: none"> <li>● RTV covered gasket surface</li> <li>● Excessive Grime</li> <li>● New OEM Honda Cylinder (49 or 72 cm3)</li> <li>● 88cc Aluminum Cylinder (52mm Bore Option)</li> </ul> |

|  |  |
|--|--|
| <ul style="list-style-type: none"> <li>● Media Blasted Exterior and Proper Color Heat Resistant Paint</li> <li>● Spark Wire Clip/Holder (CT70)</li> <li>● New Specialty Hardware</li> <li>● New Cam Roller Wheel</li> <li>● Gaskets</li> </ul> |  |
|--|--|

### Crankshaft Scope

| INCLUDED  | UPCHARGE   |
|---|--|
| <ul style="list-style-type: none"> <li>● Rebuild of your OEM crankshaft assembly (ConRod &amp; Bearings)</li> <li>● Inspection of crankshaft &amp; notification if concerns arise</li> <li>● Re-true on bench center to OEM tolerances</li> </ul> | <ul style="list-style-type: none"> <li>● Due to excessive damage, replacement of original crankshaft</li> <li>● Stroker Crank Upgrade</li> </ul> |

### Engine Case (Aluminum Center Cases) Scope

| INCLUDED  | UPCHARGE  |
|---|---|
| <ul style="list-style-type: none"> <li>● Normal dirt/gasket removal</li> <li>● Complete Splitting of cases</li> <li>● New Transmission Radial Bearings</li> </ul> | <ul style="list-style-type: none"> <li>● Scratch &amp; defect removal - polishing of center cases</li> <li>● RTV covered gasket surface</li> <li>● Excessive grime</li> </ul> |

- All threads chased with proper thread chaser tool (Not a tap)
- Late model Case – trans Needle Bearings Inspected / ADD \$25 per bearing if needed to be replaced
- Multi-Stage Cleaning with Vapor Honing as final step (Satin finish)
- New cam chain tensioner Plug & Oil drain Plug
- New Zinc Case Screws
- New Zinc Carb Drain Retaining Clip
- New Plastic Plug @ Exterior Shift Drum Retaining Bolt
- New Engine Seals
- New Gaskets
- New Crankcase Vent Hose

- Paint removal on center case
- Replacement of Jug/Cylinder head studs
- TIG welding Repairs of Aluminum Casting
- Thread repair @ footpeg bolt holes or 6mm case screw holes.
- Replacement of faulty late model needle bearings @ transmission shafts

## Clutch Assembly Scope

| INCLUDED  | UPCHARGE  |
|---|---|
| <ul style="list-style-type: none"><li>● Total breakdown and cleaning of clutch basket assembly / Inspection</li><li>● New OEM Fiber Based Friction Discs</li><li>● Standard or Heavy Duty Clutch Springs (Your Option)</li><li>● New Clutch Basket access cover gasket and screws</li></ul> | <ul style="list-style-type: none"><li>● Worn/Broken Clutch basket Parts</li><li>● Missing Parts</li><li>● New Metal clutch disc plates (Friction Discs are replaced in base charge, Metal Discs are upcharge if needed)</li><li>● Drive gear behind basket</li><li>● Bronze bushing</li><li>● Switching from semi-auto to manual clutch or vise versa</li><li>● Heavy Duty Complete clutch basket assembly for race head kits</li></ul> |

## Clutch “Right Side” Cover Scope

| INCLUDED   | UPCHARGE  |
|--|---|
| <ul style="list-style-type: none"><li>● Normal dirt/gasket removal</li><li>● Media Blast and Repainting of your cover with Hue of Honda Silver</li><li>● New Seals</li><li>● New Gaskets</li></ul> | <ul style="list-style-type: none"><li>● RTV covered gasket surface</li><li>● TIG Welding Repairs</li><li>● Filling of deeper scratches before painting cover – If</li></ul> |

|  |  |
|--|--|
| <ul style="list-style-type: none"> <li>● New clutch adjustment stud, oring, nut, washer</li> <li>● New Zinc Case Screws</li> <li>● 3 Speed semi – New external clutch adjustment stud</li> <li>● New CT70H/SL70/CL70 Model External Clutch Cable Arm &amp; Spring</li> </ul> | <p>desired extra labor charge</p> <ul style="list-style-type: none"> <li>● Polishing of entire aluminum clutch side cover</li> </ul> |
|--|--|

## Oil Pump Scope

| INCLUDED  | UPCHARGE  |
|---|---|
| <ul style="list-style-type: none"> <li>● Re-use OEM Pump or New Quality High Volume Oil Pump if wanted (OEM Honda is discontinued). HV pump requires 2mm drill out</li> <li>● New Oil Pump Cam Chain Sprocket</li> <li>● New Gaskets</li> <li>● Cleaning of OEM filter screen or replace if torn</li> </ul> | <ul style="list-style-type: none"> <li>● N/A</li> </ul> |



## Kickstart Shaft Scope

| INCLUDED   | UPCHARGE  |
|--|---|
| <ul style="list-style-type: none"><li>● New kickstart shafts on manual and semi auto engines</li></ul> | <ul style="list-style-type: none"><li>● Chrome Kickstarter lever</li><li>● Kickstart lever rubber</li></ul> |

## Shifter Shaft Scope

| INCLUDED  | UPCHARGE   |
|---|--|
| <ul style="list-style-type: none"><li>● New shifter shafts on semi auto &amp; manual clutch engines</li></ul> | <ul style="list-style-type: none"><li>● Chrome Shifter Foot lever</li><li>● Shifter lever rubber</li></ul> |

## Transmission Scope

| INCLUDED   | UPCHARGE   |
|--|--|
| <ul style="list-style-type: none"><li>● Re-Use of your transmission Gears/Main &amp; Secondary Shafts/Assemblies</li><li>● Inspection of your components (Gears, Drum, Primary Gear)</li><li>● Brass wheel cleaning of external spines of output shaft</li></ul> | <ul style="list-style-type: none"><li>● Broken / Worn hard items (Ex. Gears/shafts)</li><li>● Output shaft drive sprocket (Aka front sprocket) – I can supply front sprocket if desired</li><li>● Conversions – 3 speed to 4 speed or vice versa</li></ul> |

|   |  |
|---|--|
| <ul style="list-style-type: none"> <li>● New spline washers &amp; circlips</li> <li>● New OEM Honda Left &amp; Right Shift Forks and Shift fork Pins installed – ALWAYS REPLACED</li> </ul> |  |
|---|--|

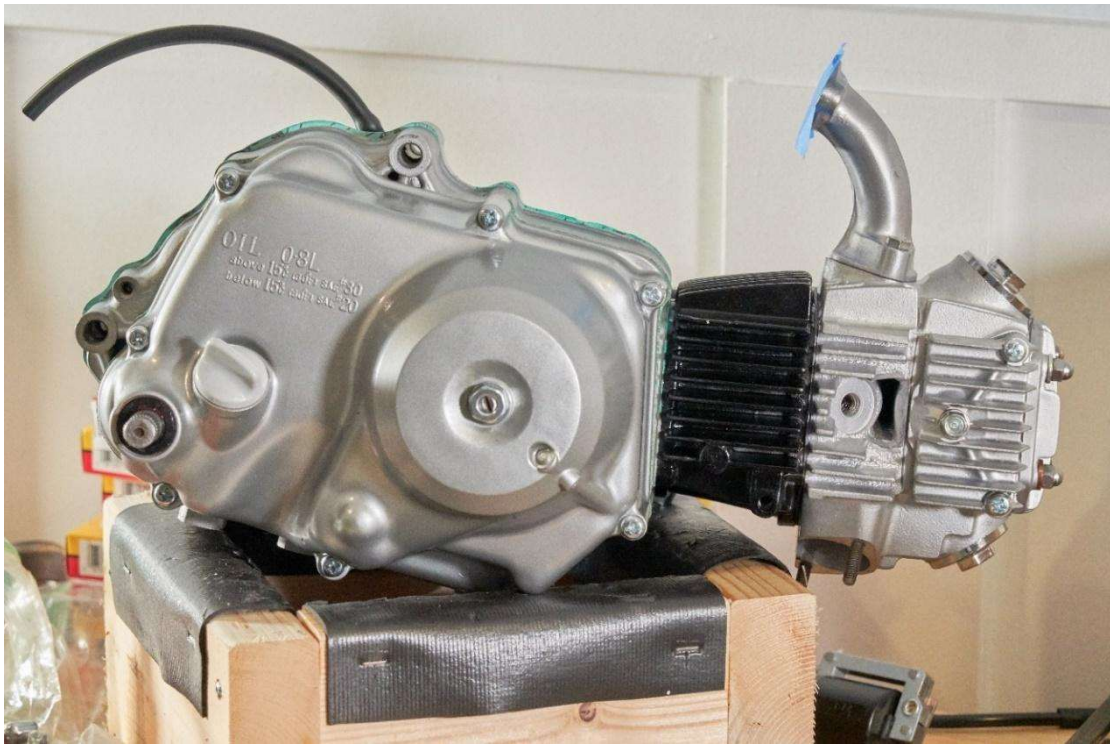
## Stator & Flywheel Scope

| INCLUDED   | UPCHARGE   |
|--|--|
| <ul style="list-style-type: none"> <li>● Rebuild of your stator with new, quality aftermarket Kit (Primary &amp; Lighting coil, condenser, point, hardware, o-rings, seal)</li> <li>● Vapor honing of All Flywheels and Re-lubricating of <u>CT70H/SL70/CL70</u> spark advancing mechanism</li> <li>● New Flywheel Nut/Washer</li> <li>● Spark timing set with dynamic timing light</li> <li>● Reuse of your neutral switch components (Certain models)</li> </ul> | <ul style="list-style-type: none"> <li>● Replacement of faulty/damaged flywheel</li> <li>● Thread repair at flywheel or repair needed to pull flywheel</li> <li>● 6v CDI upgrade kit - available option (Capacitor Discharge Ignition) in lieu of point setup</li> </ul> |

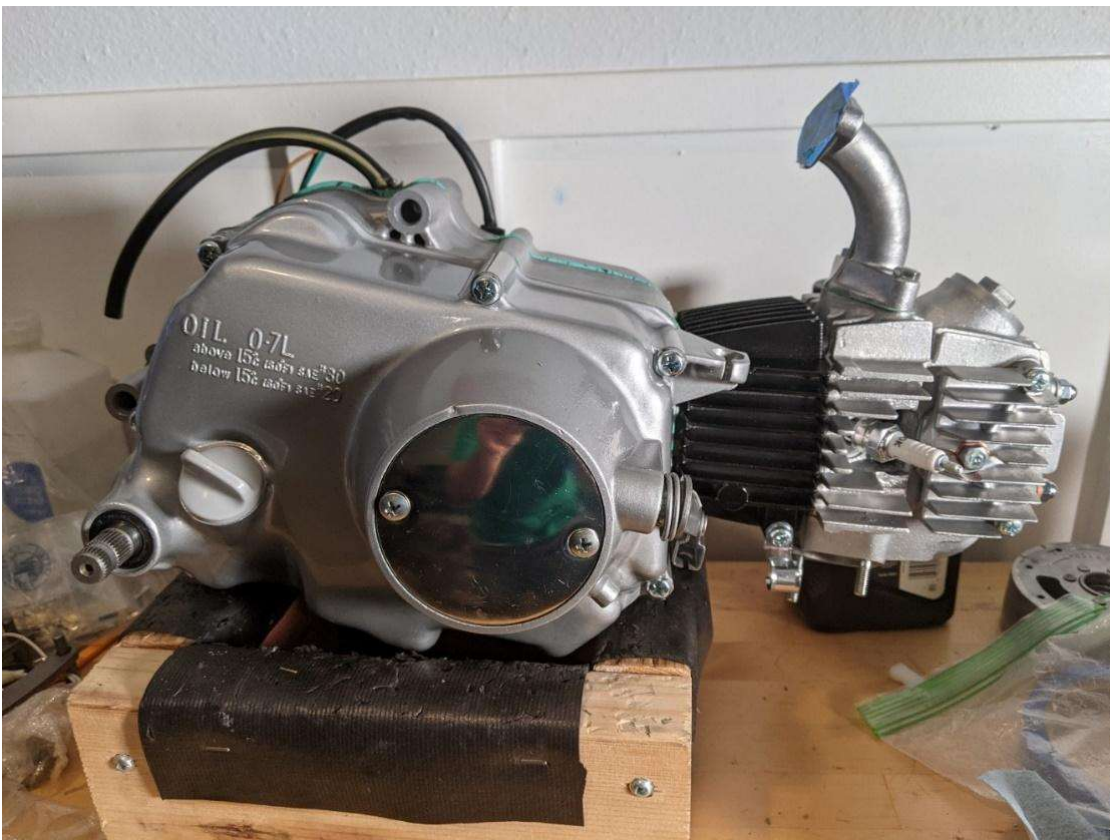
|   |  |
|---|--|
| <ul style="list-style-type: none"> <li>● Replacement of crankshaft key if needed</li> </ul> |  |
|---|--|

### Flywheel / Stator “Left Side” Cover Scope

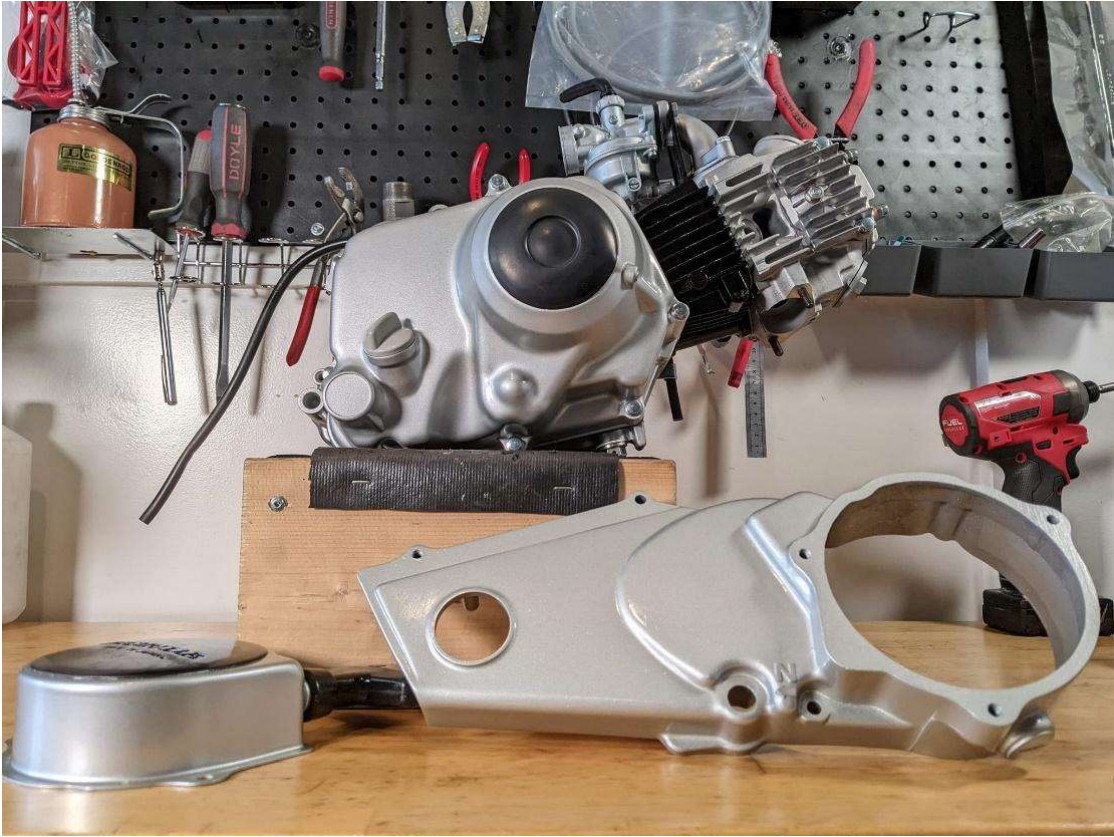
| INCLUDED  | UPCHARGE  |
|---|---|
| <ul style="list-style-type: none"> <li>● Refurbishing of your supplied Honda flywheel cover (Media blast, paint main body, lightly polish/brush round emblem)</li> <li>● Securement screws</li> </ul> | <ul style="list-style-type: none"> <li>● New/Missing Cover parts</li> </ul> |



EXAMPLE - MANUAL CLUTCH ENGINES - CT70H, SL70, XL70, CL70



## EXAMPLE - ATC70 & TRX70 Engines



==== END OF DOCUMENT ====